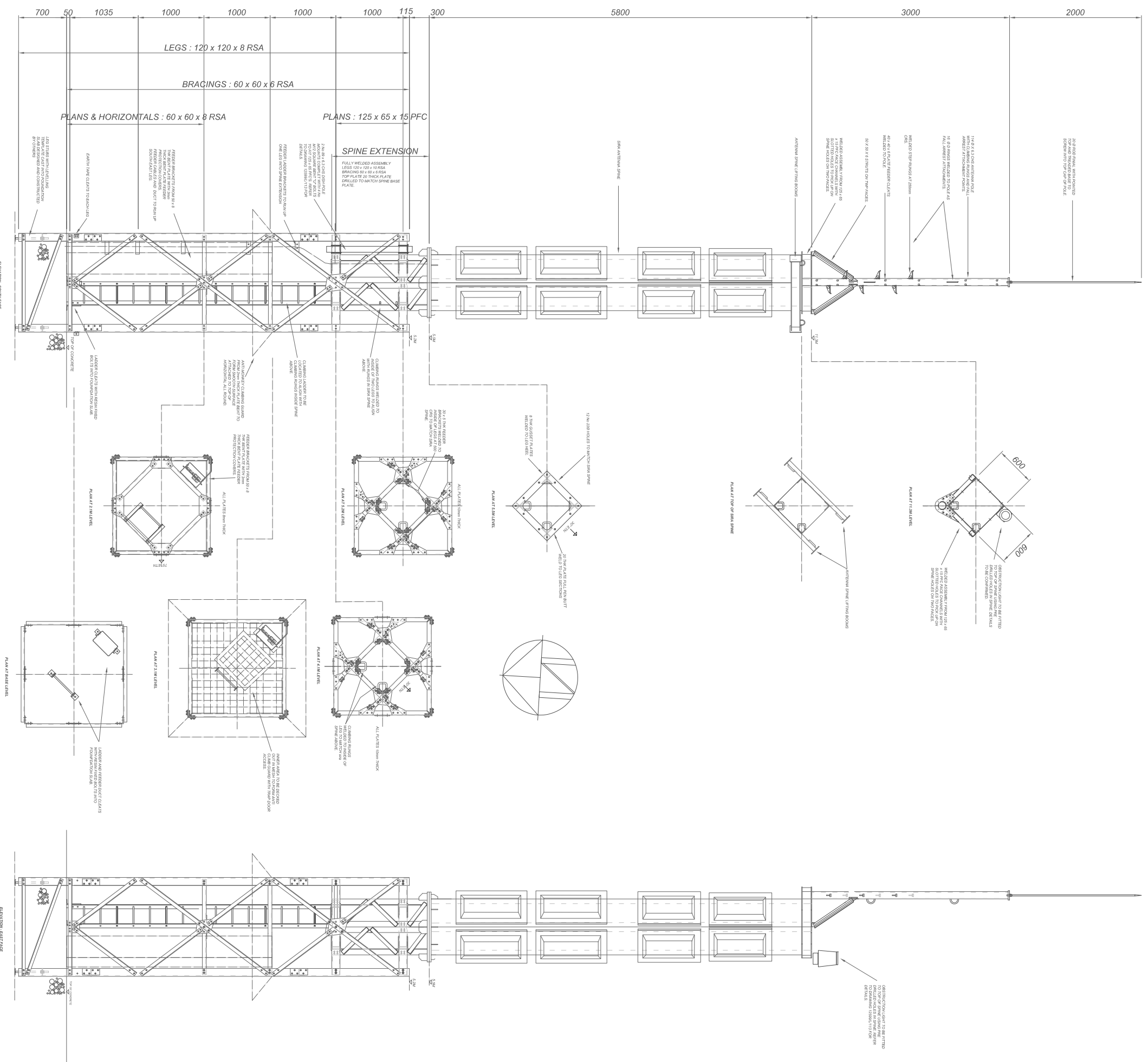


GENERAL NOTES.

1. DO NOT SCALE THIS DRAWING.
 2. ALL DIMENSIONS ARE IN mm UNLESS OTHERWISE SPECIFIED
 3. THIS DRAWING TO BE READ IN CONJUNCTION WITH DRG Nos 12599/JD/101, 102, 103, 104, 105, 106, 107, 108, 109, 110, 112, & 113.
- STEELWORK:**
- 4) ALL MATERIAL TO BE GRADE S275J0 TO BS EN 10025.
 - 5) THERMAL CUTTING OF HOLES NOT TO BE USED.
 - 6) ALL WELDING TO BE CARRIED OUT IN ACCORDANCE WITH BS EN10112-2: 2001 AND BS EN 288 BY AN APPROVED WELDER CONFORMING TO THE REQUIREMENTS OF BS EN 287, PART 1
 - 7) HOLES TO BE 1.5mm LARGER THAN BOLTS.
 - 8) ALL STEEL AND BOLTS TO BE HOT DIPPED GALVANISED TO BS EN ISO 1461
 - 9) ALL BOLTS TO BE GRADE 8.8 IN COMPLIANCE WITH BS 4190 AND SUPPLIED WITH RECTANGULAR SECTION SINGLE COIL SPRING WASHERS TO BS 4320 UNLESS NOTED OTHERWISE.
 - 10) REFER TO MATERIAL LIST MGB1, MGB2, MGB3 & BOLT LIST BSB1.



Rev	Date	By	Checked	Description
A	17/07/12	MMW	MMW	ADD MODIFIED & LIFTED LADDER AND FEEDER LADDER MODIFIED INITIAL ISSUE
B	18/07/12	MMW	MMW	GENERAL UPDATE
C	26/07/12	MMW	MMW	GRILLAGE AND FEEDER PROTECTION REVISED
D	15/08/12	MMW	MMW	CONSTRUCTION ISSUE

MMW Structures

Telecommunication Design & Management

Tempest Mews, Broughton Hall Business Park, Broughton,
Skipton, North Yorkshire, BD23 3AE

Telephone : +44 (0) 1756 700 942

Project	ARQIVA : GIBRALTAR DTT & DAB TOWER
Title	GENERAL ARRANGEMENT 14.3M VHF TOWER
Scale	N T S
Date	04.07.12
Drawn By	RC
Checked by	MDW
Drawn No	12599/L/100 D